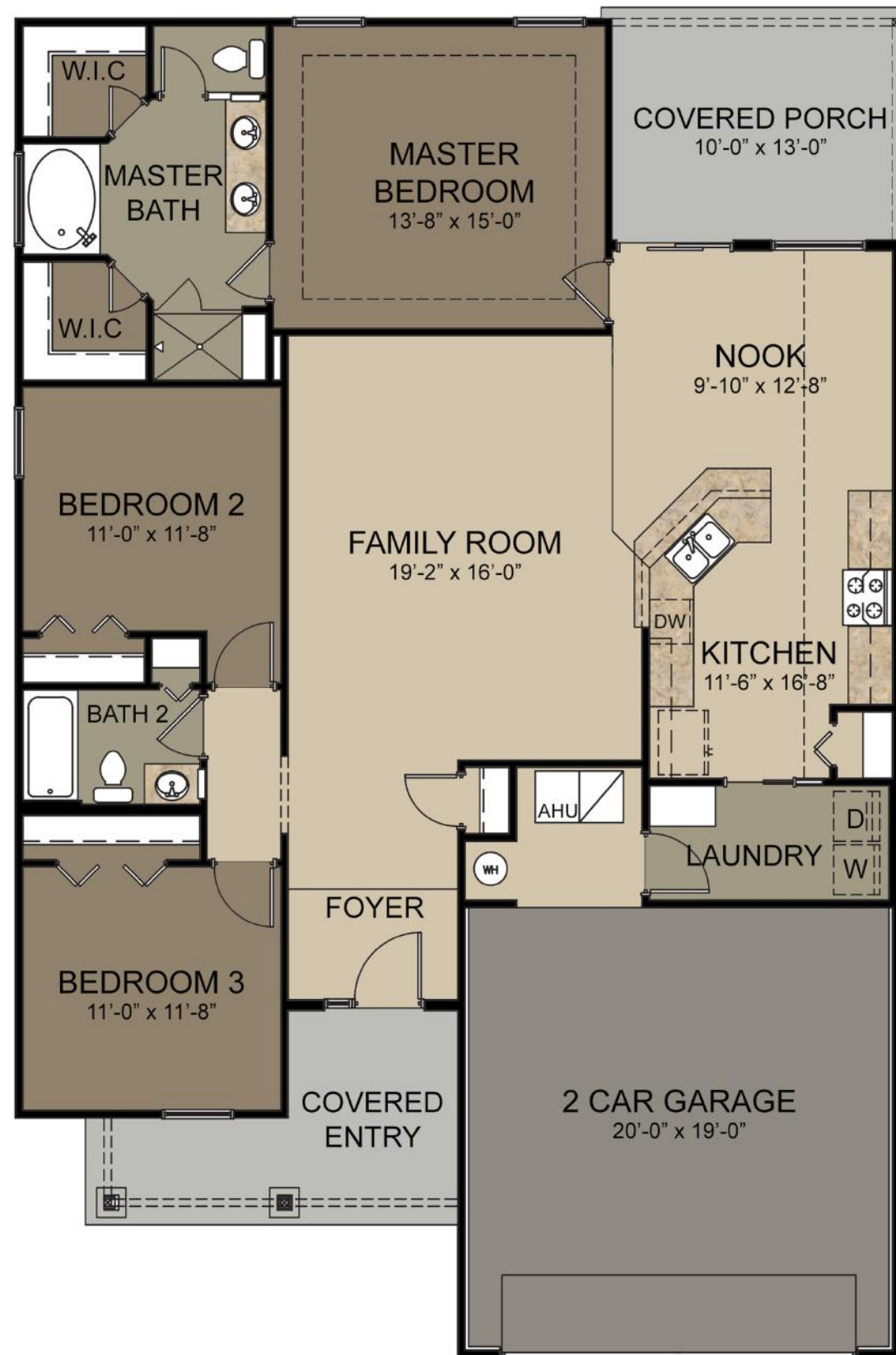


1588 E



# 1588



FLOOR PLAN

## Amenities

- 3 bedrooms
- 2 full bathrooms
- Spacious Master Bath w/ seperate shower & garden tub
- His & Her Master walk-in Closets
- 10' ceilings throughout common areas
- Spacious kitchen w/ extended bar top open to Family room
- Eat in Breakfast Nook
- Spacious Family Room
- Big Laundry Room w/ Mud Bench & Cubbies
- Covered Front & Rear Porches
- 2 Car Garage



[WWW.COLLINSBUILDERS.NET](http://WWW.COLLINSBUILDERS.NET)

This floor plan including furniture, fixture measurements and dimensions are approximate and for illustrative purposes only. Boxbrownie.com gives no guarantee, warranty or representation as to the accuracy and layout. All enquiries must be directed to the agent, vendor or party representing this floor plan.